



Developers

Excellent Developers

Site: 'Vihav Elinor',
Behind Narayan Garden,
Opp. Keystone Skyvillas,
New Alkapuri, Gotri,
Vadodara-390021

Phone: **+91 95046 36636**
+91 70461 85154

VIHAV
ELINOR

Architect

Bhaskar Narula
Placekinesis Associates

Structure Consultant

Chirag Shah
Ashok Shah and Associates

Plumbing Consultant

Vipul Patel
Jagruti Designs, Ahmedabad

design: stroke&arrow@ 9824092010



Imagine a space so connected that you will rarely feel like you are away from home. A world that is so central that it will become the hub of cosmopolitan living. An oasis of luxury so elite that it will soon be the most desirable address of the city.

Presenting

V I H A V
ELINOR

3 & 4 BHK Apartments
4 & 5 BHK Penthouses

Premium homes in
the heart of everything.



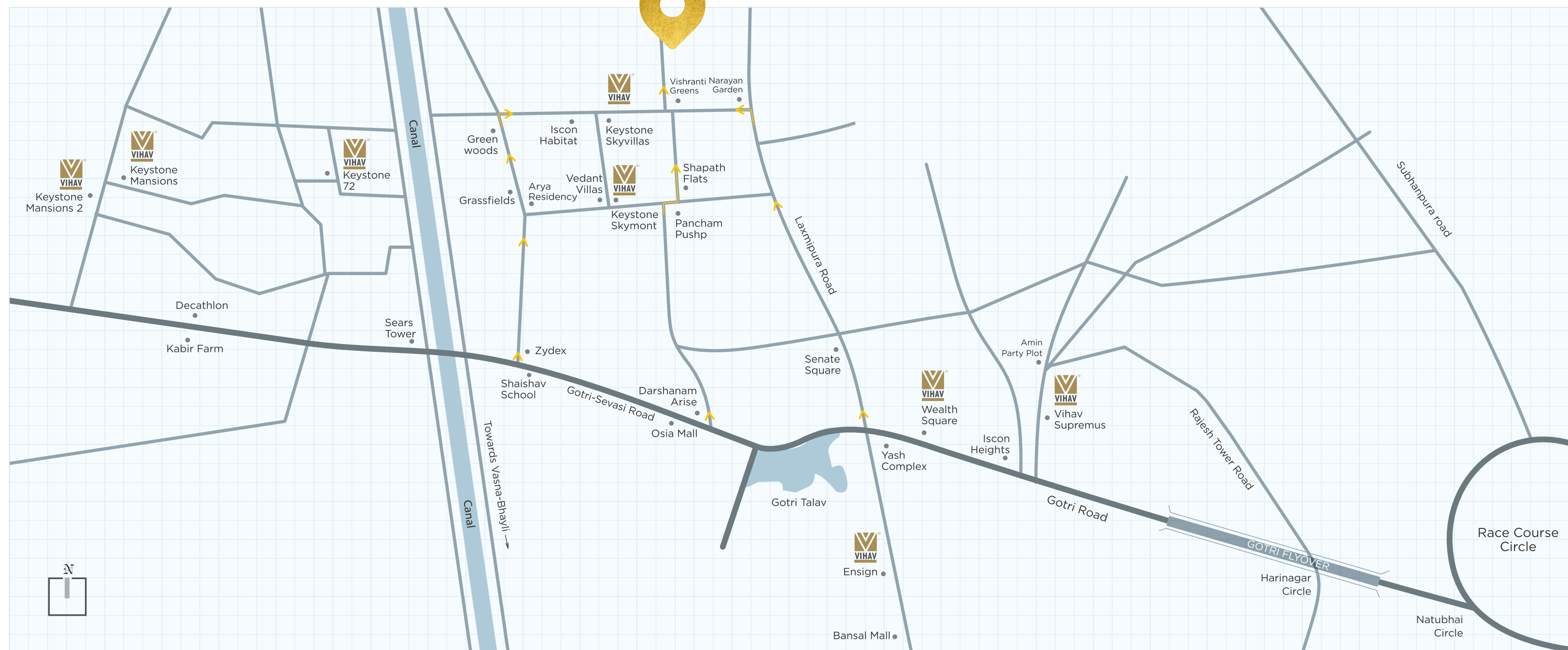
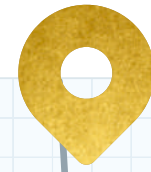


LOCATION CAN BE PREMIUM TOO

At Vihav Elinor, it's not just your homes that exude luxury, it's the location too. Set on new and fast emerging Gotri 30 m road, living here will bring you closer to everything you desire.

It's a stone's throw away from hustle-bustle of the premium residential localities of Gotri and simply a walk away from calm of farmlands. Schools, Banks, Hospitals, Malls, Gourmet Restaurants and other daily essentials are delightfully close to the city's new hotspot. Every part of the city is easily accessible and so is every mode of transport.

VIHAV
ELINOR





MAKE THEM STOP AND STARE

Classy and sophisticated, Vihav Elinor is crafted for attention. The very premium and contemporary architecture unveils the luxuries that await you inside. The 13 storeyed twin towers cast lasting first impressions of ingenious design and impeccable quality. The simple interplay of glass and concrete emphasize the abundance of natural air and light. Created to be in timeless harmony with the surroundings the magnificent campus will simply make them stop and stare.





DETAILS DO MATTER

We know that homes are made of more than just brick and mortar. They are made of dreams, love and a lifetime of longing. At Vihav, we go that extra mile to ensure that every inch of your prized possession is of top quality.

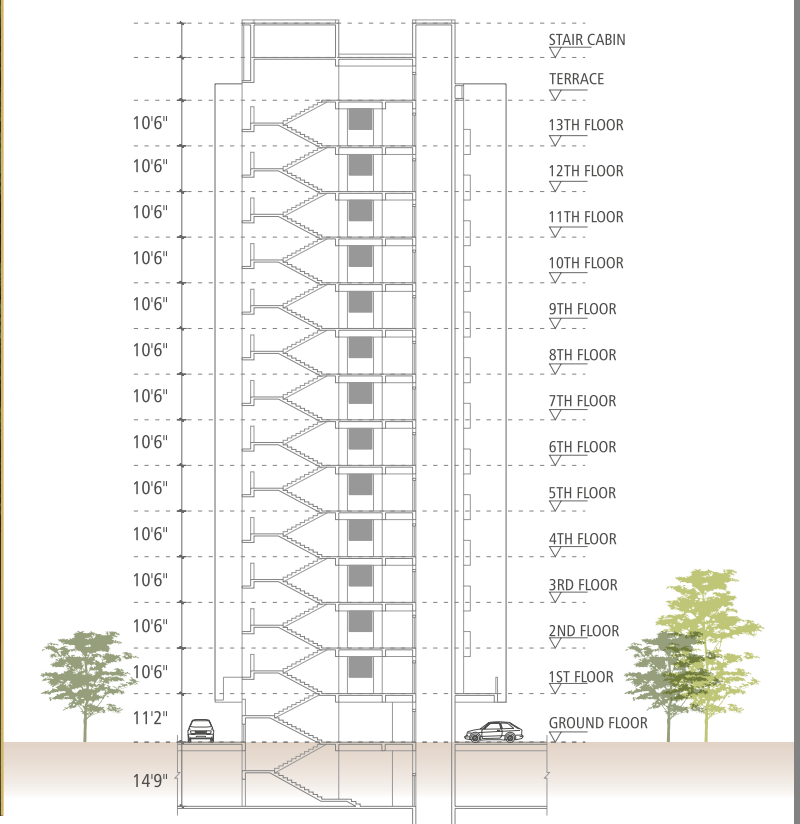
Right from structural strength to aesthetic value, from planning to layouts, from finishes to fittings and fixtures everything is handpicked to be superlative in form and function.



YOU'LL LOVE
COMING HOME

Your home must be your private paradise, complete with spacious well-appointed living spaces, spectacular views from personal decks and a life of comfort within the walls. Our elegant 3 BHK and 4 BHK apartments and expansive 4 BHK and 5 BHK Penthouses on the top floors are truly one of a kind.

The layout enables generous open balconies all across the residences to bathe your homes in sunlight and fresh air. Our first floor units with two balconies offer more scope to bring nature inside. The penthouses come with lavish terraces of various sizes to cater to your 'me-times' and 'we-times.'

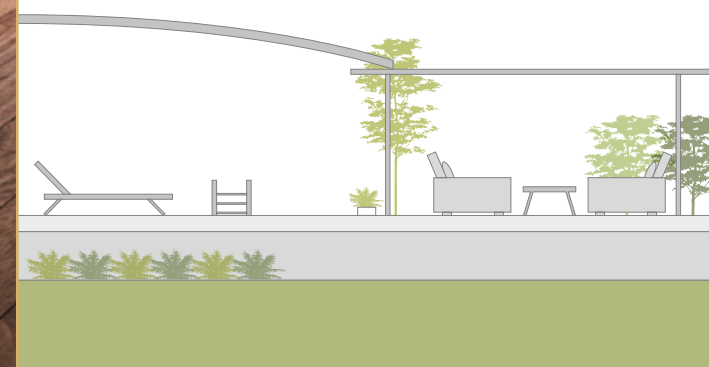




LET THE GOOD TIMES ROLL

Recreational spaces at Vihav Elinor are just as spectacular as the residences. While you can relax as you gaze at the plush landscape and the surrounding views from your large terrace, you also have a choice of indulging in some fun and frolic with your loved ones.

Good times are guaranteed at our recreational facilities set in the middle of the campus. Stroll on the perfectly manicured lawns while you pick a leisure activity for the day. Head to the gym or take a dip in the pool maybe?





GYMNASIUM



YOGA ROOM



INDOOR GAMES



T.V LOUNGE /
THEATRE



CHILDREN'S
PLAY AREA



SWIMMING POOL
WITH CHANGING ROOM
AND GAZEBO



SITTING DECK AREA
WITH WATER BODY



SQUASH ROOM

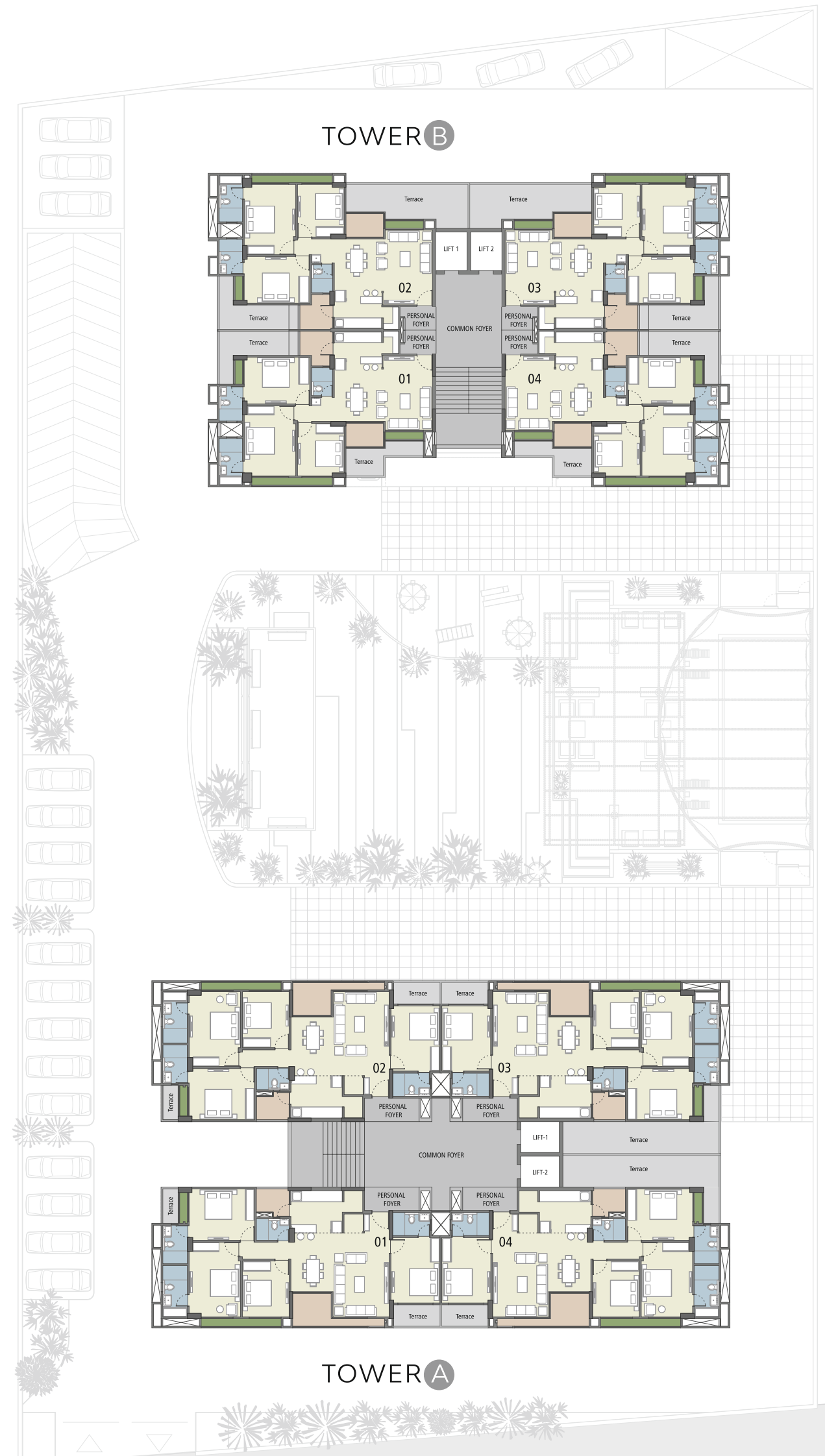


HUGE LANDSCAPED
GARDEN

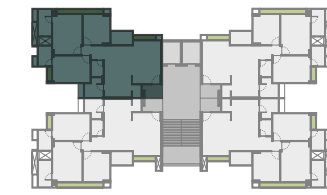
GROUND FLOOR LAYOUT



FIRST FLOOR LAYOUT



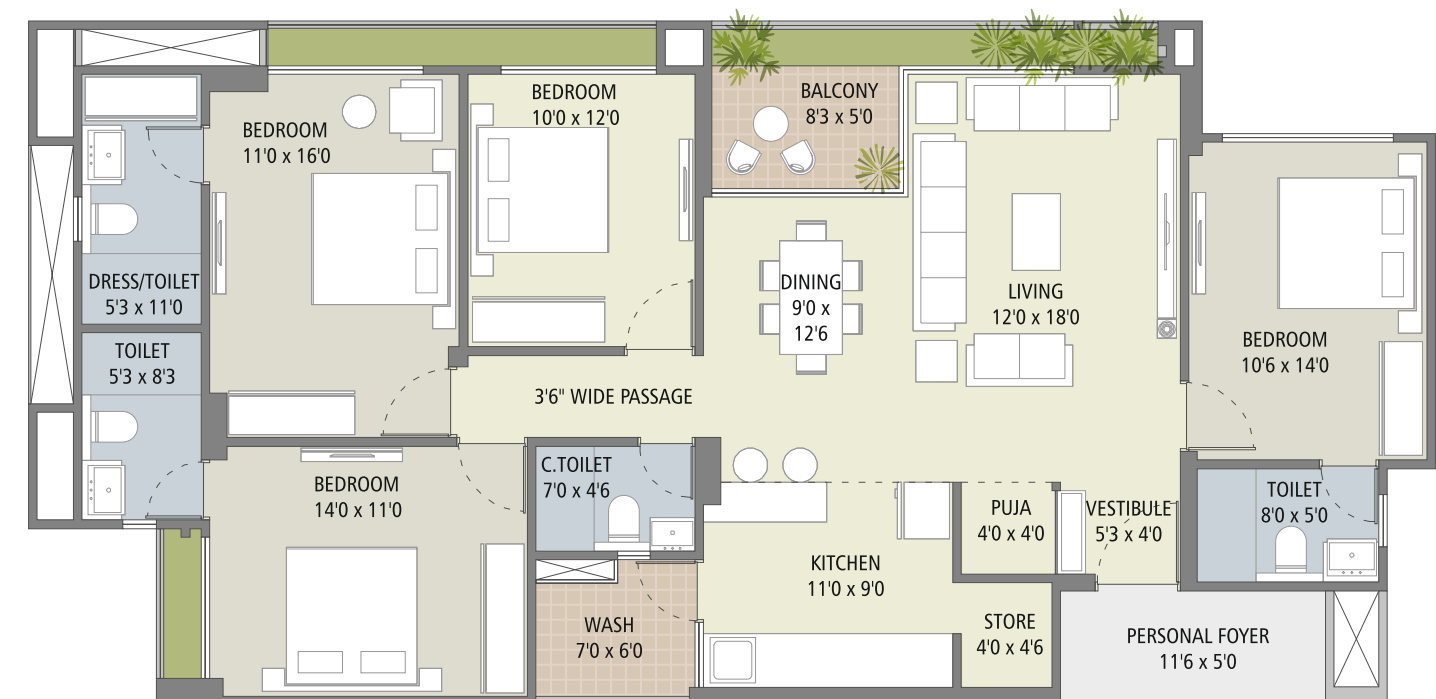
TYPICAL FLOOR LAYOUT



3 BHK
TYPICAL PLAN
(TOWER B)



4 BHK
TYPICAL PLAN
(TOWER A)





VALUE ADDITIONS

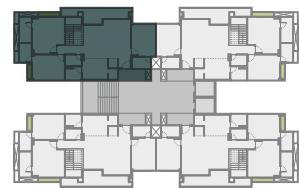
- Prime Location of New Alkapuri with Premium Residential Surrounding
- Huge Wide Space between Two Towers for Unmatched Premium Living Experience
- 2 Allotted Car Park Per Flat & 3 Allotted Car Park Per Penthouse
- Common Water Softening Plant
- Power Backup for Common Area
- Adequate Fire Safety System as per Government Norms
- Rain Water Harvesting





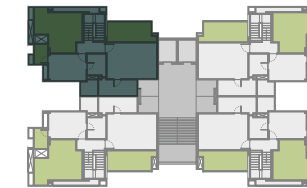
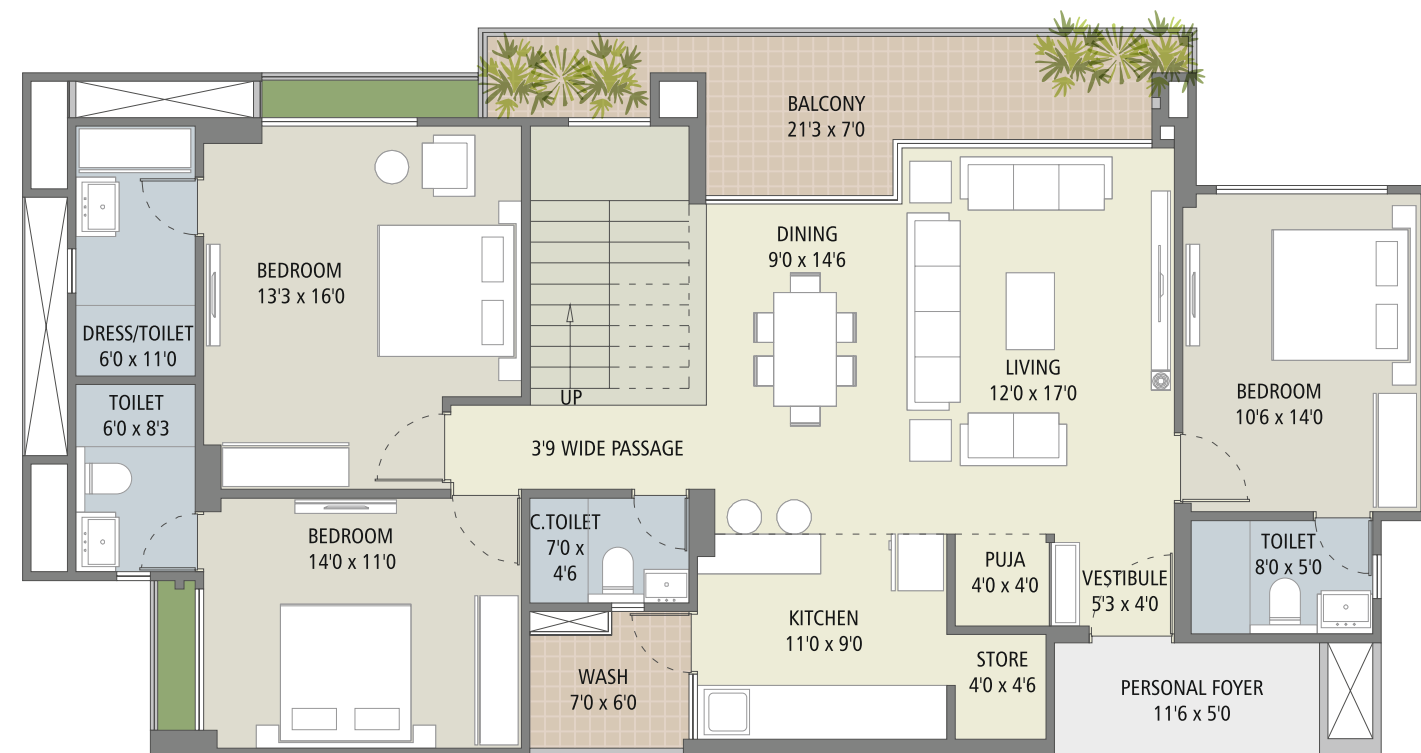
5 BHK PENTHOUSE (TOWER A)

UPPER LEVEL



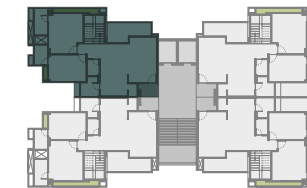
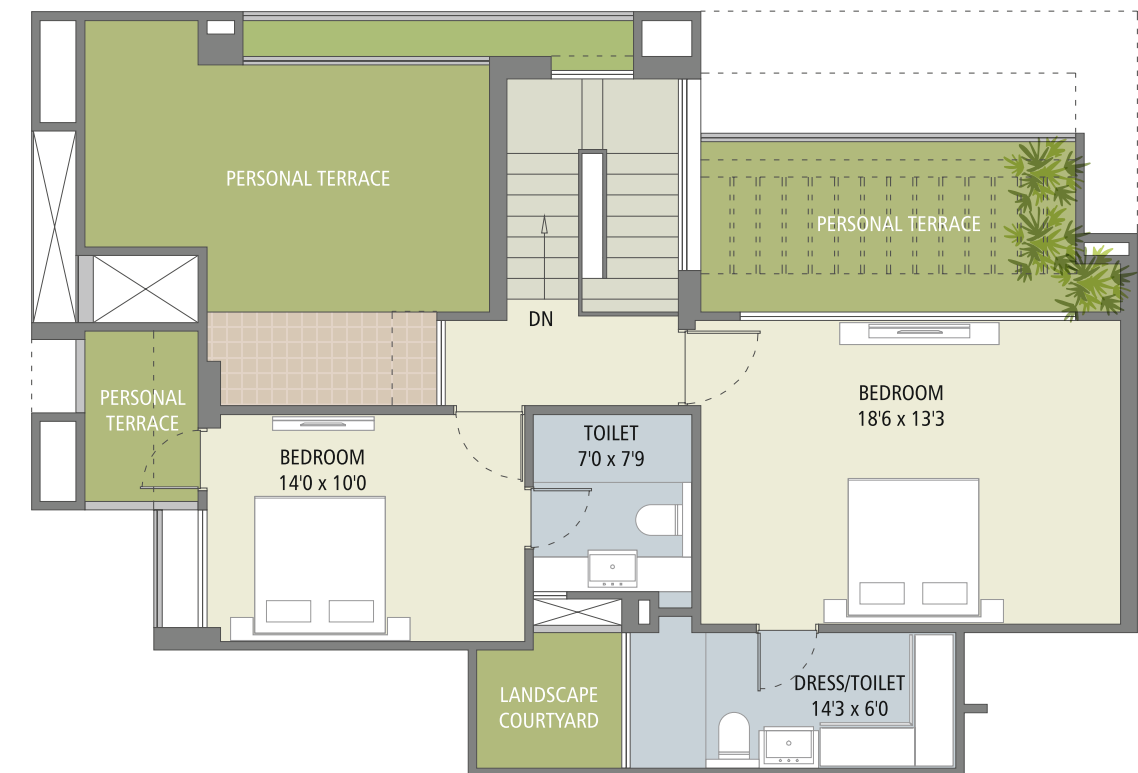
5 BHK PENTHOUSE (TOWER A)

LOWER LEVEL



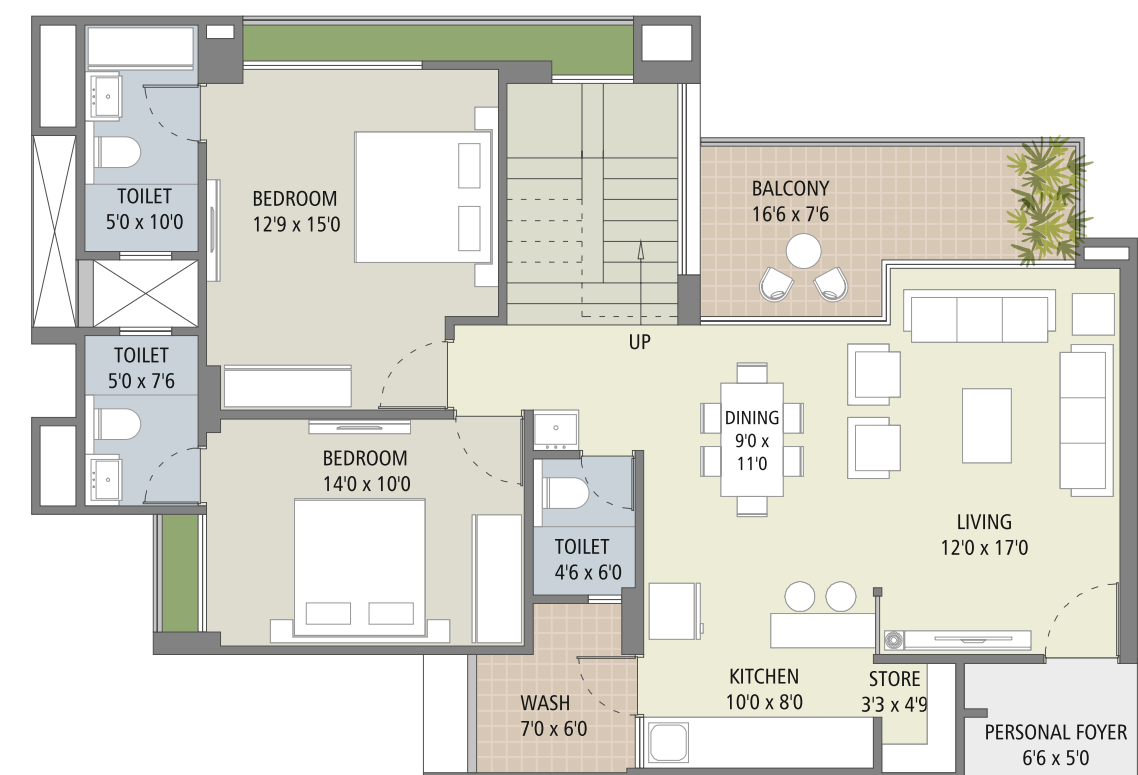
4 BHK PENTHOUSE (TOWER B)

UPPER LEVEL



4 BHK PENTHOUSE (TOWER B)

LOWER LEVEL





SPECIFICATIONS

STRUCTURE

- Earthquake Resistance Structure
- Designed by Approved Structural Engineer

KITCHEN

- Natural/ Artificial Premium Stone Platform with Quartz Sink.
- Designer Ceramic Tiles Dado above Kitchen Platform Up to 2Ft.
- Wash Area with Ceramic Tiles Dado & Natural Stone Floor

FLOORING

800 x 800 Vitrified Flooring in all Area:
Anti-skid Flooring in Balcony and Wash

WALL FINISH

Interior: 2 Coat Putty with Primer Finish
Exterior: Texture with Weather Resistant Paint

ELECTRICAL

- Concealed Copper ISI Wire with Modular Switches
- Sufficient Electrical Point as per Consultant
- MCB as Required

BATH

- Designer Bathrooms with Kohler or equivalent Fittings and Vessels
- Glazed Tile Dado Up-to Door Height
- Good Quality Concealed PVC Plumbing

DOORS

Main Door:

High Quality Wooden Frame Door with Veneer
Paneling on Both Sides

Other Internal Door:

Premium Quality with Laminated Branded Flush Doors

WINDOWS

Aluminum Sliding Windows with Mosquito Net

